



OPEN ACCESS

## EXTENDED REPORT

# Efficacy and safety of switching from reference infliximab to CT-P13 compared with maintenance of CT-P13 in ankylosing spondylitis: 102-week data from the PLANETAS extension study

Won Park,<sup>1</sup> Dae Hyun Yoo,<sup>2</sup> Pedro Miranda,<sup>3</sup> Marek Brzosko,<sup>4</sup> Piotr Wiland,<sup>5</sup> Sergio Gutierrez-Ureña,<sup>6</sup> Helena Mikazane,<sup>7</sup> Yeon-Ah Lee,<sup>8</sup> Svitlana Smiyan,<sup>9</sup> Mie-Jin Lim,<sup>1</sup> Vladimir Kadinov,<sup>10</sup> Carlos Abud-Mendoza,<sup>11</sup> HoUng Kim,<sup>12</sup> Sang Joon Lee,<sup>12</sup> YunJu Bae,<sup>12</sup> SuYeon Kim,<sup>12</sup> Jürgen Braun<sup>13</sup>

Handling editor Tore K Kvien

► Additional material is published online only. To view please visit the journal online (<http://dx.doi.org/10.1136/annrheumdis-2015-208783>).

For numbered affiliations see end of article.

**Correspondence to**

Professor Jürgen Braun, Rheumazentrum Ruhrgebiet, Claudiusstr. 45, Herne 44649, Germany; [j.braun@rheumazentrumruhrgebiet.de](mailto:j.braun@rheumazentrumruhrgebiet.de) and Professor Dae Hyun Yoo, Division of Rheumatology, Hanyang University Hospital for Rheumatic Diseases, 222-1 Wangsimni-Ro, Seongdong-Gu, Seoul 04763, Republic of Korea; [dhyoo@hanyang.ac.kr](mailto:dhyoo@hanyang.ac.kr)

Received 16 October 2015

Revised 22 March 2016

Accepted 23 March 2016

**ABSTRACT**

**Objectives** To investigate the efficacy and safety of switching from infliximab reference product (RP) to its biosimilar or maintaining biosimilar treatment in patients with ankylosing spondylitis (AS).

**Methods** This open-label extension study recruited patients with AS who completed a 54-week, randomised controlled study comparing CT-P13 with RP (PLANETAS). CT-P13 (5 mg/kg) was administered intravenously every 8 weeks from week 62 to week 102. Efficacy end points included the proportion of patients achieving Assessment of SpondyloArthritis international Society (ASAS)20. Antidrug antibodies (ADAs) were measured using an electrochemiluminescent method. Data were analysed for patients treated with CT-P13 in the main PLANETAS study and the extension (maintenance group) and those who were switched to CT-P13 during the extension study (switch group).

**Results** Overall, 174 (82.9%) of 210 patients who completed the first 54 weeks of PLANETAS and agreed to participate in the extension were enrolled. Among these, 88 were maintained on CT-P13 and 86 were switched to CT-P13 from RP. In these maintenance and switch groups, respectively, ASAS20 response rates at week 102 were 80.7% and 76.9%. ASAS40 and ASAS partial remission were also similar between groups. ADA positivity rates were comparable (week 102: 23.3% vs 27.4%). Adverse events led to treatment discontinuation during the extension study in 3 (3.3%) and 4 (4.8%) patients, respectively.

**Conclusions** This is the first study to show that switching from RP to its biosimilar CT-P13 is possible without negative effects on safety or efficacy in patients with AS. In the maintenance group, CT-P13 was effective and well tolerated over 2 years of treatment.

**Trial registration number** NCT01571206; Results.

**INTRODUCTION**

CT-P13 is a biosimilar of infliximab, a chimerical human-murine monoclonal antibody against tumour necrosis factor (TNF). Biosimilar drugs such as CT-P13 are generic versions of innovator biologics, or 'reference products' (RPs).<sup>1</sup> Regulatory authorities in Europe, the USA and elsewhere have defined strict criteria for biosimilar

approval. Although exact criteria vary in different countries or regions, it is usually necessary to show that a biosimilar is highly similar to its RP in physicochemical and biological terms. In addition, clinical studies must establish statistical equivalence in pharmacokinetics and efficacy, and comparability of safety.<sup>2-4</sup>

CT-P13 has been approved by the European Medicines Agency (EMA) for all indications held by the infliximab RP. Extensive testing has shown that all major physicochemical characteristics and in vitro biological activities of CT-P13 and RP, including affinity for soluble and transmembrane TNF, are highly comparable.<sup>5-6</sup> CT-P13 and RP were also compared in two 54-week, multinational, randomised, double-blind, parallel-group studies in ankylosing spondylitis (AS) or rheumatoid arthritis (RA), namely Programme evaluating the Autoimmune disease iNvestigational drug cT-p13 in AS patients (PLANETAS) and Programme evaluating the Autoimmune disease iNvestigational drug cT-p13 in RA patients (PLANETRA). Analyses of these randomised studies established the pharmacokinetic and efficacy equivalence of CT-P13 and infliximab RP. Immunogenicity and safety findings for the two drugs were also similar.<sup>6-9</sup>

Due to the lower cost of biosimilars versus RPs, there is considerable interest in determining if newly diagnosed patients can be effectively and safely treated with a particular biosimilar, and whether those already on RP treatment can be switched to its biosimilar without adverse consequences on efficacy or safety.<sup>10-11</sup> Collection of clinical data on this topic of 'switchability' is necessary. Here, we report the results of an open-label extension study that recruited patients with AS who had completed 54 weeks of the main PLANETAS study. This was a single-arm extension study in which all patients were pooled to be treated with CT-P13. The aims of the extension were twofold: (1) to investigate efficacy and safety during switched therapy to CT-P13 in patients previously treated with RP for 54 weeks in the main study (hereafter named the 'switch group'); and (2) to investigate the efficacy and safety of CT-P13 treatment over 2 years in those patients

**To cite:** Park W, Yoo DH, Miranda P, et al. *Ann Rheum Dis* Published Online First: [please include Day Month Year] doi:10.1136/annrheumdis-2015-208783

## Clinical and epidemiological research

treated with CT-P13 in the main study (the ‘maintenance group’). To aid interpretation, we describe the data for the maintenance and switch groups over two periods: the main study (week 0–54) and the extension study (week 54–102). A similar extension study that has recently been completed in patients with RA (PLANETRA) is also reported in this issue.<sup>12</sup>

### PATIENTS AND METHODS

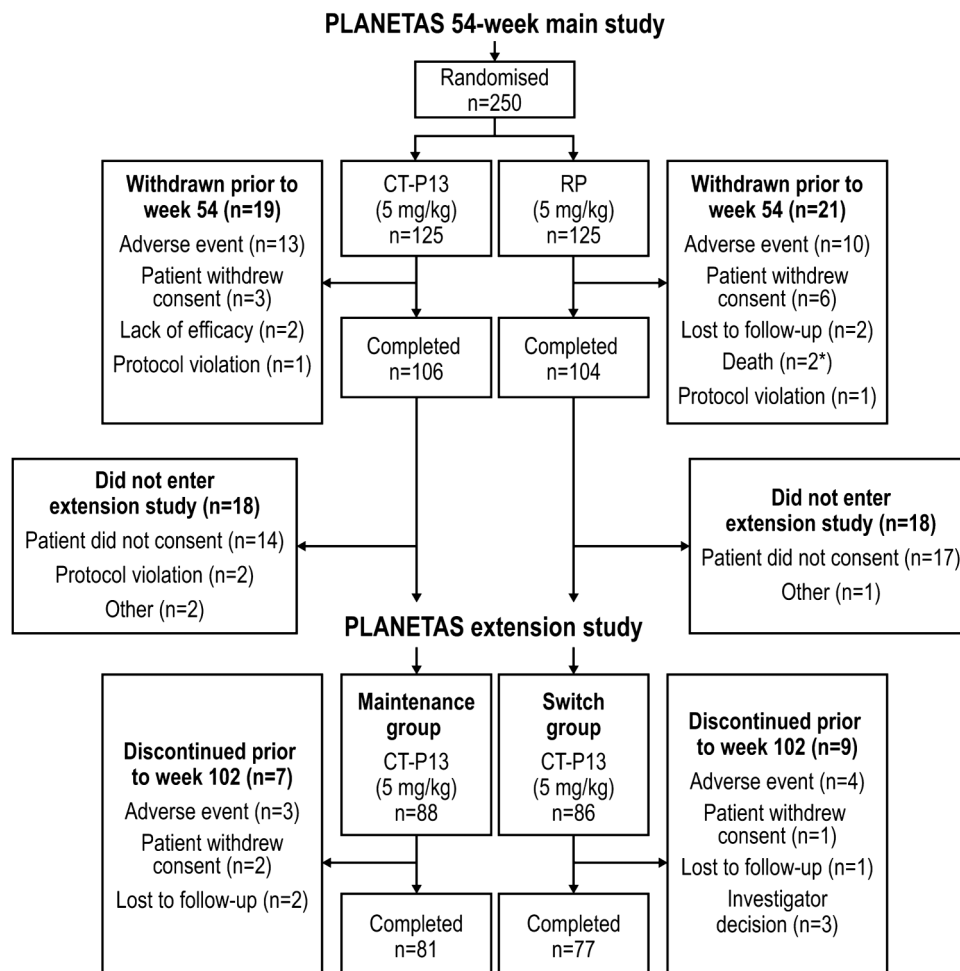
Methods of the main 54-week, randomised, double-blind, parallel-group PLANETAS study have been reported previously.<sup>6,7</sup> Briefly, the main study recruited patients aged 18–75 years with active AS for  $\geq 3$  months according to the 1984 modified New York classification criteria. This Phase 1 PLANETAS extension study (ClinicalTrials.gov identifier: NCT01571206) was an open-label, single-arm extension study conducted in 40 centres in 8 countries. Patients who had completed 54 weeks of the main PLANETAS study were offered the opportunity of entering the extension study for another 1 year. Those who did not sign a new informed consent form for the extension were excluded. Additional eligibility criteria applied for the extension study were no major protocol violation in the main study and no new therapy for AS in the extension. Details of patient flow through the main and extension studies are shown in [figure 1](#).

In the main PLANETAS study, patients received nine infusions of CT-P13 (CELLTRION, Incheon, Republic of Korea) or the infliximab RP (Janssen Biotech, Horsham, Pennsylvania, USA).

After the ninth infusion of PLANETAS study treatment (given at week 54), eligible patients could choose to continue into the extension study during which patients and physicians were blinded to the treatment received in the main study. Patients in the extension study received an additional six infusions of CT-P13 given every 8 weeks from week 62 to week 102. CT-P13 was administered via 2 h intravenous infusion at a dose of 5 mg/kg. At the discretion of the investigator, antihistamines could be provided 30–60 min before CT-P13 infusion. The extension study was performed according to the principles of the Declaration of Helsinki and International Conference on Harmonisation good clinical practice guidelines. The relevant independent ethics committees approved the study protocol, consent forms and other written information for the extension study.

### Study end points

Efficacy assessments were made at baseline and weeks 14, 30, 54, 78 and 102. Efficacy end points included the proportion of patients achieving clinical response according to Assessment of SpondyloArthritis international Society (ASAS)20 and ASAS40 criteria; the proportion of patients with ASAS partial remission (PR); the Bath Ankylosing Spondylitis Disease Activity Index (BASDAI), the Bath Ankylosing Spondylitis Functional Index, the Bath Ankylosing Spondylitis Metrology Index, and the



**Figure 1** Patient disposition during the PLANETAS extension study. All patients who enrolled in the extension study (n=88 and n=86 in the maintenance and switch groups, respectively) were included in the ITT population. \*One patient randomly assigned to RP received at least one dose of CT-P13 unintentionally. ITT, intent-to-treat; RP, reference product.

Ankylosing Spondylitis Disease Activity Score (ASDAS)-C reactive protein (CRP).

For assessment of immunogenicity, the proportion of patients with antidrug antibodies (ADAs) was assessed at baseline and weeks 14, 30, 54, 78 and 102 using an electrochemiluminescent immunoassay method, as previously reported.<sup>6 7</sup> The neutralising activity of ADAs was also assessed by a flow-through immunoassay method using the Gyros Immunoassay platform (Gyros AB, Sweden). For safety, treatment-emergent adverse events (TEAEs) were assessed throughout the main and extension studies. The following TEAEs of special interest were also monitored: infusion-related reactions (including hypersensitivity and anaphylactic reaction), tuberculosis (TB), latent TB (defined as a positive conversion on an interferon- $\gamma$  release assay—which was negative at baseline—together with a negative result on chest X-ray examination), serious infection, pneumonia, drug-induced liver injury, vascular disorders and malignancies. Other safety assessments included monitoring of vital signs, physical examination findings and clinical laboratory analyses. Details of exploratory and post hoc end points are included in online supplementary appendix A.

### Statistical analyses

Statistical analyses were conducted using SAS software V9.1.3 (SAS Institute, Cary, North Carolina, USA). Continuous data were summarised using descriptive statistics. Categorical data were summarised using counts and percentages. The populations were predefined in the study protocol and statistical analysis plan for participants in the extension study. The intent-to-treat (ITT) population consisted of all enrolled patients. The efficacy population consisted of all patients who received at least one full dose of study treatment and had data for at least one efficacy assessment in the extension study. All efficacy analyses were performed using a 'missing equals excluded' (MEX) approach. A logistic regression model was used to analyse the proportion of patients achieving clinical response (ASAS20/ASAS40/ASAS PR), with treatment group as a fixed effect and the stratification factors (baseline BASDAI score and region) as covariates. Treatment effect differences between maintenance and switch groups were estimated by calculating ORs and their 95% CI. Descriptive statistics were used to analyse other efficacy end points. The safety population (used to analyse all safety and immunogenicity events) consisted of all patients who received at least one dose of study treatment in the extension study. Data from the main study period were analysed in participants of the extension study only, and not in all patients from the main study. Methods for sensitivity analyses of ASAS responses are included in online supplementary appendix A.

## RESULTS

### Patients

The first patient visit in the main PLANETAS study was held in November 2010; the last patient visit in the extension study took place in June 2013. A total of 174 of 210 patients from the main study who consented to participate in the extension study were screened under the approval of the appropriate ethics committee (figure 1). All 174 screened patients were enrolled and were included in the ITT, efficacy and safety populations of the extension study. Of these, 88 had been randomised to CT-P13 in the main study and 86 to RP. Thus, the ITT population for the extension study included 88 and 86 patients in the maintenance and switch groups, respectively. Patient demographics and baseline characteristics were broadly comparable between these two groups (table 1). In the ITT population, 81 (92.0%) and 77

**Table 1** Patient demographics and baseline characteristics in the PLANETAS extension study (ITT population)

Variable*	Maintenance group† (n=88)	Switch group‡ (n=86)
Age, years	35.5 (18–69)	39.0 (18–66)
Gender, n (%)		
Male	68 (77.3)	74 (86.0)
Female	20 (22.7)	12 (14.0)
Ethnicity, n (%)		
Caucasian	70 (79.5)	61 (70.9)
Asian	10 (11.4)	11 (12.8)
Other	8 (9.1)	14 (16.3)
Height, cm	172.3 (148.0–198.0)	172.2 (147.0–191.0)
Weight, kg	72.0 (45.0–120.0)	76.8 (45.5–122.7)
Body mass index, kg/m <sup>2</sup>	24.4 (18.0–38.7)	26.3 (18.2–42.0)
ASDAS-CRP, mean (SD)	3.86 (0.84)	3.85 (1.09)
BASDAI score, n (%)		
<8	65 (73.9)	69 (80.2)
≥8	23 (26.1)	17 (19.8)

Data shown were recorded at the baseline visit of the preceding 54-week, randomised, parallel-group study.

\*Except where indicated otherwise, values are median (range).

†Patients treated with CT-P13 during the 54 weeks of the main study and the 48-week extension study.

‡Patients treated with RP during the 54 weeks of the main study and then switched to CT-P13 during the 48-week extension study.

ASDAS, Ankylosing Spondylitis Disease Activity Score; BASDAI, Bath Ankylosing Spondylitis Disease Activity Index; CRP, C reactive protein; ITT, intent-to-treat; RP, reference product.

(89.5%) patients in the maintenance and switch groups, respectively, completed all 48 weeks of the extension study; 7 (8.0%) and 9 (10.5%) patients discontinued the extension study. Reasons for discontinuation are detailed in figure 1. Two patients randomised to RP in the main study were incorrectly treated with CT-P13 during that study. Applying a conservative approach, those two patients were classified as being in the CT-P13 group for safety analyses in the main study. Therefore, 90 and 84 patients were included in the maintenance and switch groups, respectively, in the safety population of the extension study.

### Efficacy

During the extension study (ie, week 54–102), the proportion of patients achieving a clinical response according to ASAS20 and ASAS40 criteria, and ASAS PR rates, were maintained at similar levels to those in the main study in both the maintenance and switch groups, and were comparable between groups (table 2). In the switch group, response rates at week 102 (ie, 48 weeks after the last infusion of RP at week 54) were similar to those observed before switching (ie, at week 54; ASAS20: 76.9% at week 102 vs 75.6% at week 54; ASAS40: 61.5% vs 53.5%; ASAS PR: 23.1% vs 17.4%). Response rates at week 102 were also similar to those observed at week 54 in the maintenance group (ASAS20: 80.7% at week 102 vs 70.5% at week 54, respectively; ASAS40: 63.9% vs 58.0%; ASAS PR: 19.3% vs 17.0%). Among patients who participated in the extension study, clinical response rates were also similar between groups throughout the main study (week 0–54) (table 2). In a subgroup analysis performed according to ADA status, the proportion of ADA-negative patients achieving ASAS20 was 75.7% at week 54 and 83.9% at week 102 in the maintenance group, and 79.0% at week 54 and 84.6% at week 102 in the switch group. In comparison, 50.0% (week 54) and 70.0% (week 102) of ADA-positive patients in the maintenance group, and 66.7%

## Clinical and epidemiological research

**Table 2** Proportion of patients with AS with an ASAS20 response, ASAS40 response and ASAS PR\* (efficacy population in PLANETAS extension study with MEX approach)

Visit	Efficacy parameter	Group	Responder n/N (%)	OR†	95% CI of OR	p Value‡
Week 14	ASAS20	Maintenance§	58/87 (66.7)	1.05	0.56 to 1.97	0.966
		Switch¶	56/86 (65.1)			
	ASAS40	Maintenance	40/87 (46.0)	0.97	0.53 to 1.78	0.842
		Switch	40/86 (46.5)			
	ASAS PR	Maintenance	14/87 (16.1)	1.16	0.49 to 2.71	0.596
		Switch	12/86 (14.0)			
Week 30	ASAS20	Maintenance	65/88 (73.9)	0.85	0.43 to 1.70	0.359
		Switch	66/86 (76.7)			
	ASAS40	Maintenance	50/88 (56.8)	1.19	0.65 to 2.18	0.783
		Switch	45/86 (52.3)			
	ASAS PR	Maintenance	14/88 (15.9)	0.95	0.42 to 2.15	0.997
		Switch	14/86 (16.3)			
Week 54	ASAS20	Maintenance	62/88 (70.5)	0.75	0.38 to 1.48	0.455
		Switch	65/86 (75.6)			
	ASAS40	Maintenance	51/88 (58.0)	1.20	0.66 to 2.18	0.592
		Switch	46/86 (53.5)			
	ASAS PR	Maintenance	15/88 (17.0)	1.00	0.45 to 2.20	0.915
		Switch	15/86 (17.4)			
Week 78	ASAS20	Maintenance	61/87 (70.1)	0.66	0.33 to 1.32	0.137
		Switch	64/83 (77.1)			
	ASAS40	Maintenance	50/87 (57.5)	1.25	0.68 to 2.31	0.080
		Switch	43/83 (51.8)			
	ASAS PR	Maintenance	18/87 (20.7)	1.08	0.51 to 2.31	0.359
		Switch	16/83 (19.3)			
Week 102	ASAS20	Maintenance	67/83 (80.7)	1.25	0.58 to 2.70	0.506
		Switch	60/78 (76.9)			
	ASAS40	Maintenance	53/83 (63.9)	1.09	0.57 to 2.07	0.672
		Switch	48/78 (61.5)			
	ASAS PR	Maintenance	16/83 (19.3)	0.80	0.37 to 1.72	0.275
		Switch	18/78 (23.1)			

\*PR was defined as a value of <20 on a 0–100 scale in each of the following four domains: patient global assessment, pain, function and inflammation.

†The OR was estimated using a logistic regression model with treatment as a fixed effect, and region and baseline BASDAI score as covariates. An OR of >1 indicates increased odds in favour of the maintenance group.

‡The p value was calculated using the Hosmer–Lemeshow test for the goodness-of-fit of the logistic regression model. The test is significant at the 5% level.

§Patients treated with CT-P13 during the 54 weeks of the main study and the 48-week extension study.

¶Patients treated with RP during the 54 weeks of the main study and then switched to CT-P13 during the 48-week extension study.

AS, ankylosing spondylitis; ASAS, Assessment of SpondyloArthritis international Society; ASAS20, 20% response according to the ASAS International Working Group criteria for improvement; ASAS40, 40% response according to the ASAS International Working Group criteria for improvement; MEX, missing equals excluded; n, number of patients with response; N, number of patients in group; PR, partial remission; RP, reference product.

(week 54) and 62.5% (week 102) in the switch group achieved ASAS20 (online supplementary appendix B, figure B-1). As summarised in [figure 2](#), there were no noticeable changes in other efficacy end points during the PLANETAS extension, either between or within groups.

Sensitivity analyses to compare populations and statistical approaches appeared to support sustained efficacy and comparability between the two groups. Analyses using the last observation carried forward (LOCF) approach showed highly similar results to those using the MEX approach, both in the maintenance group (ASAS20: 80.7% at week 102 with both LOCF and MEX approaches) and the switch group (ASAS20: 74.4% at week 102 using LOCF vs 76.9% using MEX). Analyses of the main study ITT population using the LOCF and non-responder imputation (NRI) approaches showed relatively low response rates compared with the extension study ITT population. However, when analysed using the LOCF approach, response rates were comparable between the two groups and were sustained throughout the 2-year study period, both in the

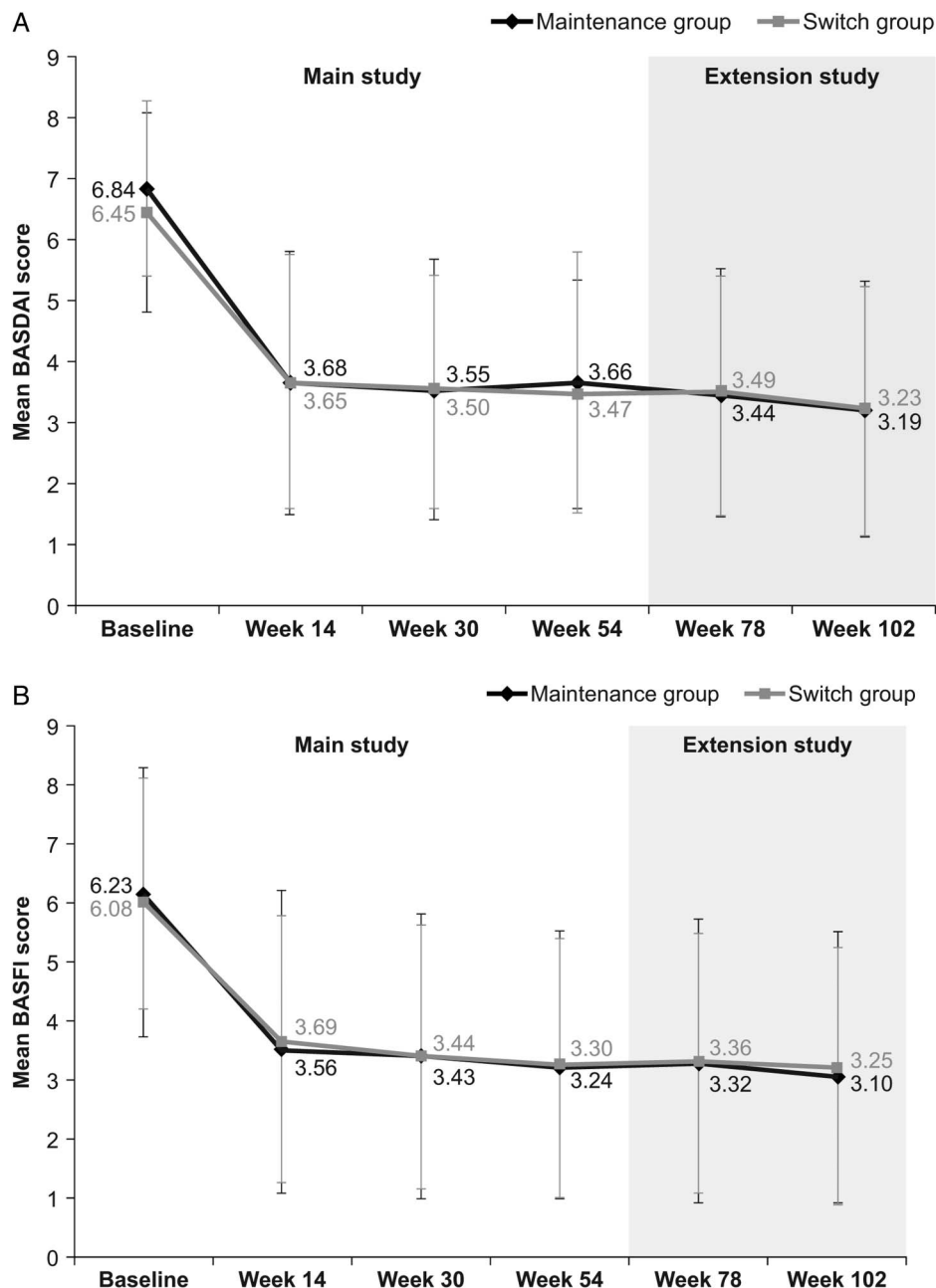
extension study ITT population (ASAS20: 80.7% at week 102 vs 70.5% at week 54 in the maintenance group, 74.4% vs 75.6% in the switch group) and the main study ITT population (ASAS20: 65.6% at week 102 vs 58.4% at week 54 in the CT-P13 group, 64.8% vs 65.6% in the RP group) (online supplementary appendix C, tables C-1 and C-2). When analysed using the NRI approach, lower response rates were seen at week 102 than week 54 but rates were still comparable between the groups (ASAS20: 53.6% at week 102 vs 56.8% at week 54 in the maintenance group; 48.0% vs 60.0% in the switch group) (online supplementary appendix C, table C-3).

### Immunogenicity

During the main and extension studies, the proportion of patients with ADAs was similar in the maintenance and switch groups at each time point ([table 3](#)). At week 54, the proportions of patients with ADAs in the maintenance and switch groups were 22.2% and 26.2%, respectively. In the extension study, these figures were 23.3% and 29.8% at week 78 and 23.3% and



**Figure 2** Additional efficacy end points assessed in the PLANETAS extension study. Mean (SD) BASDAI (A), BASFI (B), BASMI (C) and ASDAS-CRP (D) scores in maintenance\* (n=88) and switch\*\* (n=86) groups during the main study and the extension study (efficacy population). \*Patients treated with CT-P13 during the 54 weeks of the main study and the 48-week extension study. \*\*Patients treated with RP during the 54 weeks of the main study and then switched to CT-P13 during the 48-week extension study. ASDAS, Ankylosing Spondylitis Disease Activity Score; BASDAI, Bath Ankylosing Spondylitis Disease Activity Index; BASFI, Bath Ankylosing Spondylitis Functional Index; BASMI, Bath Ankylosing Spondylitis Metrology Index; CRP, C reactive protein; RP, reference product.



27.4% at week 102. Between-group differences did not reach statistical significance at any time point. In the switch group, ADA incidence did not increase from week 54 to 102 (26.2% vs 27.4%). In general, most of the patients with a positive ADA result were also positive for neutralising antibodies. The proportion of ADA-positive patients with sustained ADAs was similar in the two groups (85.7% and 88.9% in the maintenance and switch groups, respectively). There was no analysis for IgG4.

### Pharmacodynamics

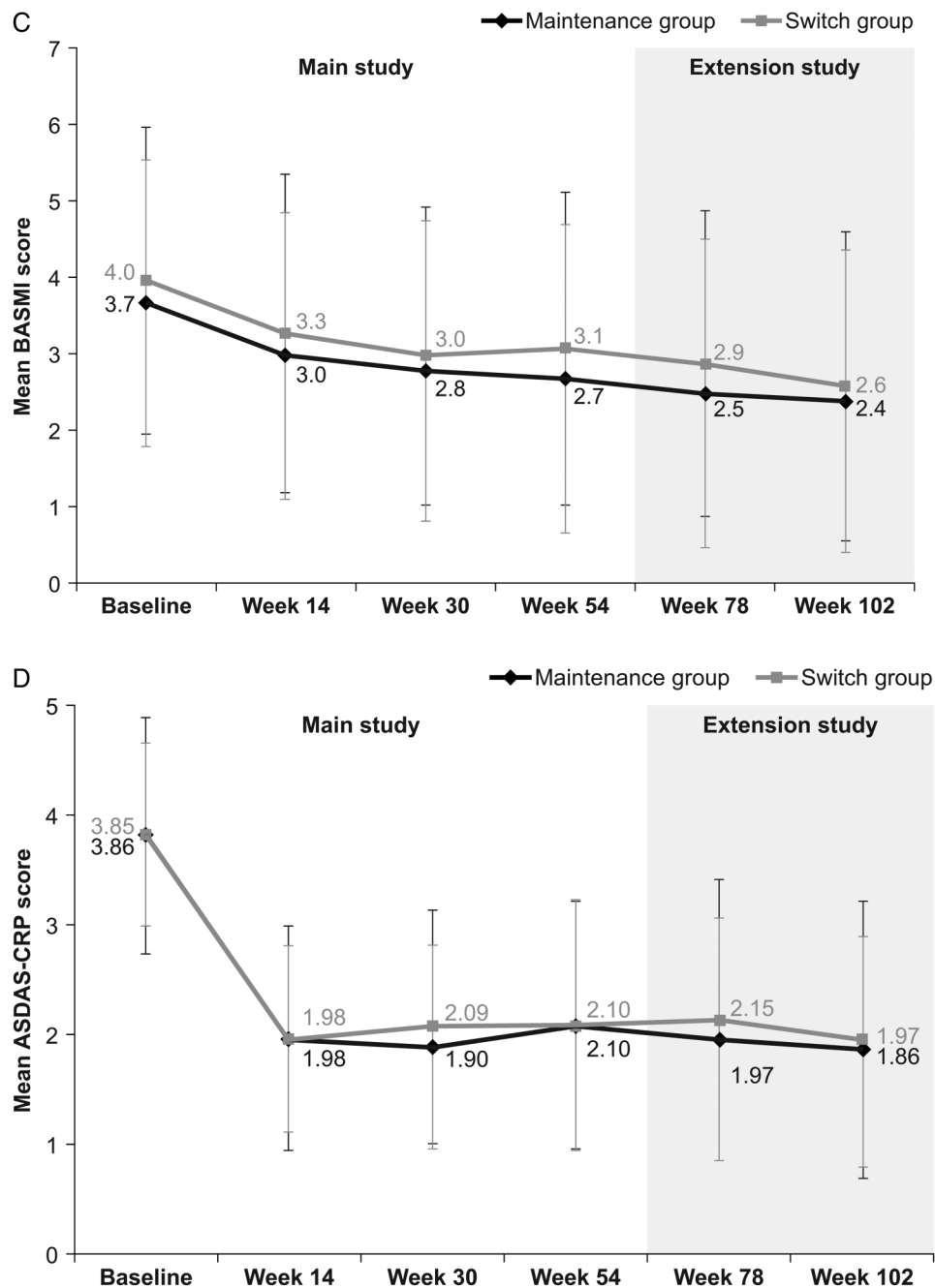
In a subgroup analysis by ADA status, mean change from baseline in CRP and erythrocyte sedimentation rate (ESR) was comparable in the maintenance and switch groups at week 54 and week 102 in both ADA-negative and ADA-positive patients (see online supplementary appendix B, table B-1).

### Safety

The proportion of patients who experienced at least one TEAE was 48.9% (n=44 of 90) in the maintenance group and 71.4%

(n=60 of 84) in the switch group during the extension study, and 70.0% (n=63) and 61.9% (n=52) during the main study. Online supplementary appendix D lists all TEAEs reported during the extension study (see online supplementary table D-1). Rates of TEAEs in both groups during the main and extension studies were within the range reported in historical studies with infliximab RP (online supplementary appendix E). TEAEs considered by the investigator to be related to study treatment were reported in 20 (22.2%) and 33 (39.3%) patients in the maintenance and switch groups, respectively, during the extension study, and in 40 (44.4%) and 35 (41.7%) patients during the main study. During the extension phase, reported treatment-related TEAEs included infusion-related reactions (7.8% and 7.1% in the maintenance and switch groups, respectively), abnormal liver function tests (4.4% and 4.8%), latent TB (2.2% and 4.8%) and upper respiratory tract infection (3.3% and 2.4%) (table 4). Most treatment-related TEAEs were mild to moderate in severity (45.6% (41 of 90) and 65.5% (55 of 84) in maintenance and switch groups, respectively).

Figure 2 Continued.



TEAEs led to discontinuation of treatment during the extension study in 3 (3.3%) and 4 (4.8%) patients in the maintenance and switch groups, respectively. In both groups, four patients experienced treatment-emergent serious adverse events (SAEs) during the extension study. Two of these SAEs were considered related to treatment (TB, one in each group). During the main study, four (4.4%) and two (2.4%) patients in the maintenance and switch groups, respectively, experienced treatment-emergent SAEs. One of these events, which occurred in a patient in the switch group, was considered to be related to treatment (cellulitis). All these SAEs were resolved except one SAE (prostate cancer) which was reported in the maintenance group during the extension study and which was considered to be unrelated to the study drug by the investigator.

Data on TEAEs of special interest are shown in [table 5](#). Infusion-related reactions were reported in seven (7.8%) patients in the maintenance group and six (7.1%) in the

switch group during the extension study. Of these, four patients in each group were ADA-positive (see online supplementary appendix B, table B-2). Among patients with infusion-related reactions, none experienced anaphylaxis. During the main study period, infusion-related reactions were reported in four (4.4%) and seven (8.3%) patients in the maintenance and switch groups, respectively. Of these, one and four patients, respectively, were ADA-positive. Latent TB occurred in five (5.6%) and seven (8.3%) patients in the maintenance and switch groups, respectively, during the extension study, and in six (6.7%) and three (3.6%) patients in the main study. Patients reporting latent TB received TB prophylaxis according to local guidelines. Among such patients, two reported active TB SAEs during the extension study (one in each group), as reported above. One malignancy was observed during the extension study (the case of prostate cancer described above).

**Table 3** Proportion of patients with ankylosing spondylitis (AS) who were positive for antidrug antibodies (ADAs) and neutralising antibodies (NAb) in PLANETAS: the main 54-week parallel-group study and the extension study (safety population)

Time point	Patients positive for ADAs and NAb, n (%)		p Value
	Maintenance group* (n=90)	Switch group† (n=84)	
<b>Main study period</b>			
Week 14 ADAs	7 (7.8)	8 (9.5)	0.79
NAb	6 (85.7)	8 (100.0)	
Week 30 ADAs	18 (20.0)	17 (20.2)	1.00
NAb	17 (94.4)	16 (94.1)	
Week 54 ADAs	20 (22.2)	22 (26.2)	0.60
NAb	20 (100.0)	22 (100.0)	
<b>Extension study period</b>			
Week 78 ADAs	21 (23.3)	25 (29.8)	0.39
NAb	21 (100.0)	25 (100.0)	
Week 102 ADAs	21 (23.3)	23 (27.4)	0.60
NAb	21 (100.0)	23 (100.0)	
<b>ADA persistency (n/N<sup>#</sup>, %)</b>			
Sustained ADAs	24/28 (85.7)	24/27 (88.9)	1.00
Transient ADAs	4/28 (14.3)	3/27 (11.1)	1.00

Percentage NAb results are based on the number of positive ADA results at that visit. ADA persistency was defined as transient when a patient tested positive for ADAs at one or more time point but negative at the last available time point. The remaining patients with positive ADA results were considered to have shown a sustained ADA response.

N<sup>#</sup>, total number of patients with at least one positive ADA result.

\*Patients treated with CT-P13 during the 54 weeks of the main study and the 48-week extension study.

†Patients treated with RP during the 54 weeks of the main study and then switched to CT-P13 during the 48-week extension study.

RP, reference product.

## DISCUSSION

The open-label extension study reported here evaluated the efficacy and safety of treatment with a maximum of six infusions of CT-P13 in patients with AS who had previously been treated with either CT-P13 (maintenance group) or RP (switch group) for 54 weeks. In the switch group, ASAS response rates were maintained from week 54 (ie, the time of the last RP infusion) to week 102 (ie, 48 weeks after the last RP infusion). In the maintenance arm, responses to CT-P13 observed in the preceding 54-week study were maintained throughout the open-label extension study. As previously reported,<sup>6,7</sup> efficacy findings at weeks 30 and 54 of PLANETAS were comparable to 24-week and 54-week data from the infliximab arm of ASSERT (Ankylosing Spondylitis Study for the Evaluation of Recombinant infliximab Therapy) and another pivotal placebo-controlled study of RP in AS.<sup>13–15</sup> Similarly, ASAS response rates in the maintenance group at the end of the PLANETAS extension (ie, week 102) were comparable to those observed at week 102 of ASSERT (ASAS20: 80.7% vs 73.9%, respectively; ASAS40: 63.9% vs 59.4%).<sup>16</sup> Data for all other efficacy end points were also similar between the maintenance and switch groups throughout the main and extension study periods, as well as within each group over both study periods. Sensitivity analyses supported the findings of sustained efficacy and comparability between groups. LOCF and MEX approaches reported highly similar results, both in the maintenance and switch groups. Analyses of the main study ITT and extension study ITT populations showed comparable and sustained

**Table 4** Treatment-related TEAEs reported in at least 1% of patients in total, n (%) (safety population)

TEAE	Maintenance group* (n=90)	Switch group† (n=84)	Total (N=174)
<b>Main study period</b>			
Abnormal liver function test	9 (10.0)	8 (9.5)	17 (9.8)
Upper respiratory tract infection	8 (8.9)	6 (7.1)	14 (8.0)
Infusion-related reaction	4 (4.4)	7 (8.3)	11 (6.3)
Latent tuberculosis	6 (6.7)	3 (3.6)	9 (5.2)
Urinary tract infection	4 (4.4)	2 (2.4)	6 (3.4)
Neutropenia	3 (3.3)	2 (2.4)	5 (2.9)
Rash	2 (2.2)	3 (3.6)	5 (2.9)
Headache	3 (3.3)	1 (1.2)	4 (2.3)
Elevated serum creatine kinase	2 (2.2)	2 (2.4)	4 (2.3)
Sinusitis	2 (2.2)	1 (1.2)	3 (1.7)
Dizziness	1 (1.1)	1 (1.2)	2 (1.1)
Herpes virus infection	1 (1.1)	1 (1.2)	2 (1.1)
Hypertension	1 (1.1)	1 (1.2)	2 (1.1)
Weight increased	1 (1.1)	1 (1.2)	2 (1.1)
Leucopenia	0	2 (2.4)	2 (1.1)
<b>Extension study period</b>			
Infusion-related reactions	7 (7.8)	6 (7.1)	13 (7.5)
Abnormal liver function test	4 (4.4)	4 (4.8)	8 (4.6)
Latent tuberculosis	2 (2.2)	4 (4.8)	6 (3.4)
Upper respiratory tract infection	3 (3.3)	2 (2.4)	5 (2.9)
Elevated serum creatine kinase	2 (2.2)	1 (1.2)	3 (1.7)
Lower respiratory tract infection	2 (2.2)	1 (1.2)	3 (1.7)
Back pain	0	3 (3.6)	3 (1.7)
Cough	1 (1.1)	1 (1.2)	2 (1.1)
Hypophosphataemia	1 (1.1)	1 (1.2)	2 (1.1)
Tuberculosis	1 (1.1)	1 (1.2)	2 (1.1)
Weight decreased	1 (1.1)	1 (1.2)	2 (1.1)

\*Patients treated with CT-P13 during the 54 weeks of the main study and the 48-week extension study.

†Patients treated with RP during the 54 weeks of the main study and then switched to CT-P13 during the 48-week extension study.

RP, reference product; TEAE, treatment-emergent adverse event.

outcomes throughout the 2-year study. Although analysis of the main study ITT population using the NRI approach showed lower response rates at week 78 and week 102 than when the LOCF approach was used, response rates were still comparable between groups. Differences in response rates by analysis method were likely due to the fact that some patients who responded during the main study were not included in the extension ([figure 1](#)); therefore, the LOCF approach can be considered the most appropriate method.

In this extension study, CT-P13 was well tolerated, displaying a safety profile over the long term that was consistent with the profile of infliximab RP.<sup>16,17</sup> No notable differences were observed between the maintenance and switch groups in the incidence of TEAEs leading to discontinuation from the study (3/90 and 4/84, respectively), SAEs (4 patients in either group), serious infections including active TB, ADAs or infusion reactions ([tables 3](#) and [5](#)). A lower proportion of patients in the maintenance group than the switch group experienced one or more TEAE during the extension. To further evaluate the numerical imbalance in the proportions of patients reporting TEAEs during the extension study, a safety meta-analysis using data from historical studies conducted with infliximab RP was

**Table 5** TEAEs of special interest regardless of relationship to study treatment in the PLANETAS main and extension study, n (%) (safety population)

TEAE	Maintenance group* (n=90)	Switch group† (n=84)
Main study period		
Infusion-related reactions	4 (4.4)	7 (8.3)
Tuberculosis	0	0
Latent tuberculosis	6 (6.7)	3 (3.6)
Serious infection	0	1 (1.2)
Pneumonia	1 (1.1)	0
Drug-induced liver injury	0	0
Vascular disorders	3 (3.3)	1 (1.2)
Malignancies	0	0
Extension study period		
Infusion-related reactions	7 (7.8)	6 (7.1)
Tuberculosis	1 (1.1)	1 (1.2)
Latent tuberculosis	5 (5.6)	7 (8.3)
Serious infection	2 (2.2)	1 (1.2)
Pneumonia	0	0
Drug-induced liver injury	0	0
Vascular disorders	3 (3.3)	2 (2.4)
Malignancies	1 (1.1)	0

\*Patients treated with CT-P13 during the 54 weeks of the main study and the 48-week extension study.

†Patients treated with RP during the 54 weeks of the main study and then switched to CT-P13 during the 48-week extension study.

RP, reference product; TEAE, treatment-emergent adverse event.

performed. For this purpose, a literature search was conducted to identify studies in patients with AS focusing on randomised studies or those with an observational design, with a duration of at least 54 weeks and long-term cohorts, and observational studies capturing safety reporting up to 2 years. Only studies which reported the methodology of collecting safety data and incidence of adverse events using reliable denominators were included in the meta-analysis. The result of the meta-analysis is presented in online supplementary figure E-1. The proportion of patients reporting TEAEs in both the maintenance and switch groups was within the range reported in historical studies with infliximab RP.<sup>6 16 18–22</sup> Of note, the majority of TEAEs in the switch group were generally mild to moderate in severity. In addition, the incidence of infusion-related reactions did not increase in patients who switched from RP to CT-P13, while the proportion of patients with sustained or transient ADAs was comparable between groups throughout the study, although only qualitative analyses of these data were performed. In a similarly designed extension study of PLANETRA—a Phase III study which compared CT-P13 and RP in patients with RA—the incidence of TEAEs in the maintenance and switch groups was similar (see online supplementary appendix F).<sup>12</sup> In this regard, there was no indication of a change in the safety profile when patients transitioned from infliximab RP to CT-P13.

It is well known that development of ADAs against infliximab is associated with a decreased clinical response and is also linked to adverse effects such as infusion-related reactions.<sup>23 24</sup> We observed lower ASAS20 response rates, higher levels of CRP and ESR, and a higher incidence of infusion-related reactions in ADA-positive compared with ADA-negative patients. These effects were comparable in both groups, suggesting that switching from RP to CT-P13 did not have a negative impact, regardless of ADA status.

The current data suggest that switching to CT-P13 in patients previously treated with the infliximab RP shows similar efficacy and safety profiles, compared with maintaining CT-P13. A number of randomised and non-randomised studies have investigated the issue of switchability for other biosimilar drugs, including those such as the epoetins, granulocyte-colony stimulating factors and human growth hormone that have been approved in Europe for several years.<sup>25–31</sup> In general, these studies suggest there are unlikely to be adverse consequences of switching between innovator biologics and those biosimilars that have undergone the rigorous level of scrutiny necessary for approval by the EMA. The similarly designed extension of the PLANETRA study in patients with RA also showed no adverse effects of switching to CT-P13 from RP.<sup>12</sup>

It is important to note that this single-arm, open-label extension study was neither designed nor powered to formally evaluate the non-inferiority or equivalence of switching from RP to CT-P13 vs continued treatment with CT-P13. In this regard, a randomised, double-blind, Phase IV study has been initiated in Norway ('NOR-SWITCH'; ClinicalTrials.gov identifier: NCT02148640). NOR-SWITCH is comparing the safety and efficacy of switching from the infliximab RP to CT-P13 vs continued treatment with RP in adults with RA, spondyloarthritis, chronic psoriasis, psoriatic arthritis, ulcerative colitis or Crohn's disease. In addition, a pharmacovigilance programme has been initiated by the manufacturers of CT-P13. This programme will monitor the safety of CT-P13 in patients with various inflammatory diseases, including AS, who have switched from RP, and who are receiving infliximab treatment for the first time.

## CONCLUSIONS

CT-P13 was well tolerated with comparable efficacy and safety as the historical infliximab RP treatment in patients with AS over 102 weeks. Furthermore, switching from the infliximab RP to CT-P13 after 1 year of infliximab RP treatment showed continued comparable efficacy, immunogenicity and safety, to maintenance of CT-P13 treatment during the 2nd year of the treatment.

## Author affiliations

<sup>1</sup>IN-HA University, School of Medicine, Medicine/Rheumatology, Incheon, Republic of Korea

<sup>2</sup>Hanyang University Hospital for Rheumatic Diseases, Seoul, Republic of Korea

<sup>3</sup>Universidad de Chile and Centro de Estudios Reumatológicos, Santiago de Chile, Chile

<sup>4</sup>Department of Rheumatology and Internal Diseases, Pomeranian Medical University in Szczecin, Szczecin, Poland

<sup>5</sup>Medical University of Wrocław, Wrocław, Poland

<sup>6</sup>Department of Rheumatology, Hospital Civil de Guadalajara "Fray Antonio Alcalde" CUCS, Universidad de Guadalajara, Guadalajara Jalisco, Mexico

<sup>7</sup>Outpatient Clinic 'ORTO', Riga, Latvia

<sup>8</sup>Division of Rheumatology, Department of Internal Medicine, School of Medicine, Kyung Hee University, Seoul, Republic of Korea

<sup>9</sup>Ya. Horbachevsky Ternopil State Medical University, Municipal Institution of Ternopil Regional Council "Ternopil University Hospital", Ternopil, Ukraine

<sup>10</sup>Multiprofile Hospital for Active Treatment 'Sv. Marina', Varna, Bulgaria

<sup>11</sup>Hospital Central and Faculty of Medicine, Universidad Autónoma de San Luis Potosí, San Luis Potosí, Mexico

<sup>12</sup>CELLTRION, Incheon, Republic of Korea

<sup>13</sup>Rheumazentrum Ruhrgebiet, Herne, Germany

**Acknowledgements** The authors thank the patients and study personnel who made this trial possible, and the PLANETAS study investigators: Bulgaria: Rashkov R; Chile: Goecke Sariego I, Gutierrez M; Korea (Republic of): Kang SW, Kim HY, Kim TH, Park YB, Park YE, Song JS, Suh CH; Latvia: Anderson D, Saulite-Kandevica D; Mexico: Araiza R, Morales-Torres J, Pacheco-Tena C; Poland: Brzezicki J, Jaworski J, Korkosz M, Krogulec M, Piotrowski M, Jeka S, Hrycaj P; Spain: Blanco Garcia F, Diaz-González F; Ukraine: Amosova K, Kovalenko V, Dyadyk O, Gnylorybov A, Ter-Vartanian S; USA: Ahn C. The authors thank Rick Flemming (Aspire Scientific



Limited, Bollington, UK) for editorial support (writing assistance, assembling tables and figures, collating author comments, grammatical editing and referencing). Editorial support was funded by CELLTRION Healthcare Co., Ltd (Incheon, Republic of Korea).

**Contributors** WP, DHY, JB, SJL, HUK, YJB and SYK were involved in the conception and design of the study, and/or analysis and interpretation of data, drafting of the manuscript and revising it critically for important intellectual content, and final approval of the version to be published. PM, MB, PW, SG-U, HM, Y-AL, SS, M-JL, VK and CA-M were involved in the acquisition of data, drafting of the manuscript and revising it critically for important intellectual content, and the final approval of the version to be published.

**Funding** This study was funded by CELLTRION Inc (Incheon, Republic of Korea).

**Disclaimer** The sponsor participated in study design, in the collection, analysis and interpretation of study data, and in reviewing drafts of the manuscript. The final decision to submit the manuscript was made by the authors.

**Competing interests** DHY and WP: Consultation for Celltrion. MB has received research grants from Celltrion, personal fees from lectures for Roche, Abbvie, MSD, Pfizer, Eisai, UCB outside the submitted work; JB has received honoraria for talks, advisory boards, paid consultancies or grants for studies from Abbvie (Abbott), Amgen, Boehringer Ingelheim, Bristol-Myers-Squibb, Celgene, Celltrion, Centocor, Chugai, EBEWE Pharma, Janssen, Medac, MSD (Schering-Plough), Mundipharma, Novartis, Pfizer (Wyeth), Roche, Sanofi-Aventis and UCB. HUK, SJL, YJB and SYK are full-time employees of Celltrion. Otherwise, none declared.

**Patient consent** Obtained.

**Ethics approval** The protocol was reviewed and approved by each site's institutional review board or independent ethics committee.

**Provenance and peer review** Not commissioned; externally peer reviewed.

**Data sharing statement** All data available for this paper are included in the manuscript and online supplementary appendices.

**Open Access** This is an Open Access article distributed in accordance with the Creative Commons Attribution Non Commercial (CC BY-NC 4.0) license, which permits others to distribute, remix, adapt, build upon this work non-commercially, and license their derivative works on different terms, provided the original work is properly cited and the use is non-commercial. See: <http://creativecommons.org/licenses/by-nc/4.0/>

## REFERENCES

- 1 WHO, World Health Organization. Expert Committee on Biological Standardization. Geneva, 19 to 23 October 2009. Guidelines on evaluation of similar biotechnological products (SBPs). 2009. [http://www.who.int/biologicals/areas/biological\\_therapeutics/BIO\\_THERAPEUTICS\\_FOR\\_WEB\\_22APRIL2010.pdf](http://www.who.int/biologicals/areas/biological_therapeutics/BIO_THERAPEUTICS_FOR_WEB_22APRIL2010.pdf) (accessed 19 Feb 2015).
- 2 European Medicines Agency. Committee for Medicinal Products for Human Use (CHMP). Guideline on Similar Biological Medicine Products (CHMP/437/04 Rev 1). 23 October 2014. [http://www.ema.europa.eu/docs/en\\_GB/document\\_library/Scientific\\_guideline/2014/10/WC500176768.pdf](http://www.ema.europa.eu/docs/en_GB/document_library/Scientific_guideline/2014/10/WC500176768.pdf) (accessed 2 Jul 2015).
- 3 U.S. Department of Health and Human Services; Food and Drug Administration; Center for Drug Evaluation and Research (CDER); Center for Biologics Evaluation and Research (CBER). Scientific Considerations in Demonstrating Biosimilarity to a Reference Product. Guidance for Industry. April 2015. <http://www.fda.gov/downloads/Drugs/GuidanceComplianceRegulatoryInformation/Guidances/UCM291128.pdf> (accessed 2 Jul 2015).
- 4 Feagan BG, Choquette D, Ghosh S, et al. The challenge of indication extrapolation for infliximab biosimilars. *Biologics* 2014;42:177–83.
- 5 Jung SK, Lee KH, Jeon JW, et al. Physicochemical characterization of Remsima. *mAbs* 2014;6:1163–77.
- 6 Park W, Hrycaj P, Jeka S, et al. A randomised, double-blind, multicentre, parallel-group, prospective study comparing the pharmacokinetics, safety, and efficacy of CT-P13 and innovator infliximab in patients with ankylosing spondylitis: the PLANETAS study. *Ann Rheum Dis* 2013;72:1605–12.
- 7 Park W, Yoo DH, Jaworski J, et al. Comparable long-term efficacy, as assessed by patient-reported outcomes, safety and pharmacokinetics, of CT-P13 and reference infliximab in patients with ankylosing spondylitis: 54-week results from the randomized, parallel-group PLANETAS study. *Arthritis Res Ther* 2016;18:25.
- 8 Yoo DH, Hrycaj P, Miranda P, et al. A randomised, double-blind, parallel-group study to demonstrate equivalence in efficacy and safety of CT-P13 compared with innovator infliximab when coadministered with methotrexate in patients with active rheumatoid arthritis: the PLANETRA study. *Ann Rheum Dis* 2013;72:1613–20.
- 9 Yoo DH, Racewicz A, Brzezicki J, et al. A phase III randomized study to evaluate the efficacy and safety of CT-P13 compared with reference infliximab in patients with active rheumatoid arthritis: 54-week results from the PLANETRA study. *Arthritis Res Ther* 2016;18:82.
- 10 Ebberts HC, Crow SA, Vulto AG, et al. Interchangeability, immunogenicity and biosimilars. *Nat Biotechnol* 2012;30:1186–90.
- 11 Tóthfalusi L, Endrényi L, Chow SC. Statistical and regulatory considerations in assessments of interchangeability of biological drug products. *Eur J Health Econ* 2014;15(Suppl.1):S5–11.
- 12 Yoo DH, Prodanovic N, Jaworski J, et al. Efficacy and safety of CT-P13 (biosimilar infliximab) in patients with rheumatoid arthritis: comparison between switching from reference infliximab to CT-P13 and continuing CT-P13 in the PLANETRA extension study. *Ann Rheum Dis* 2016; In Press.
- 13 Braun J, Brandt J, Listing J, et al. Long-term efficacy and safety of infliximab in the treatment of ankylosing spondylitis: an open, observational, extension study of a three-month, randomized, placebo-controlled trial. *Arthritis Rheum* 2003;48:2224–33.
- 14 van der Heijde D, Dijkmans B, Geusens P, et al. Efficacy and safety of infliximab in patients with ankylosing spondylitis: results of a randomized, placebo-controlled trial (ASSERT). *Arthritis Rheum* 2005;52:582–91.
- 15 Braun J, Brandt J, Listing J, et al. Treatment of active ankylosing spondylitis with infliximab: a randomised controlled multicentre trial. *Lancet* 2002;359:1187–93.
- 16 Braun J, Deodhar A, Dijkmans B, et al. Efficacy and safety of infliximab in patients with ankylosing spondylitis over a two-year period. *Arthritis Rheum* 2008;59:1270–8.
- 17 Maini RN, Breedveld FC, Kalden JR, et al. Sustained improvement over two years in physical function, structural damage, and signs and symptoms among patients with rheumatoid arthritis treated with infliximab and methotrexate. *Arthritis Rheum* 2004;50:1051–65.
- 18 Braun J, Brandt J, Listing J, et al. Two year maintenance of efficacy and safety of infliximab in the treatment of ankylosing spondylitis. *Ann Rheum Dis* 2005;64:229–34.
- 19 Breban M, Ravaud P, Claudepierre P, et al. Maintenance of infliximab treatment in ankylosing spondylitis: results of a one-year randomized controlled trial comparing systematic versus on-demand treatment. *Arthritis Rheum* 2008;58:88–97.
- 20 Inman RD, Maksymowych WP, Group CS. A double-blind, placebo-controlled trial of low dose infliximab in ankylosing spondylitis. *J Rheumatol* 2010;37:1203–10.
- 21 Temekonidis TI, Alamanos Y, Nikas SN, et al. Infliximab therapy in patients with ankylosing spondylitis: an open label 12 month study. *Ann Rheum Dis* 2003;62:1218–20.
- 22 Gossec L, Le Henanff A, Breban M, et al. Continuation of treatment with infliximab in ankylosing spondylitis: 2-yr open follow-up. *Rheumatology (Oxford)* 2006;45:859–62.
- 23 Plasencia C, Pascual-Salcedo D, Nuño L, et al. Influence of immunogenicity on the efficacy of long-term treatment of spondyloarthritis with infliximab. *Ann Rheum Dis* 2012;71:1955–60.
- 24 Baert F, Noman M, Vermeire S, et al. Influence of immunogenicity on the long-term efficacy of infliximab in Crohn's disease. *N Engl J Med* 2003;348:601–8.
- 25 Davis-Ajami ML, Wu J, Downton K, et al. Epoetin zeta in the management of anemia associated with chronic kidney disease, differential pharmacology and clinical utility. *Biologics* 2014;8:155–67.
- 26 Flodmark CE, Lijla K, Woehling H, et al. Switching from originator to biosimilar human growth hormone using dialogue teamwork: single-center experience from Sweden. *Biol Ther* 2013;3:35–43.
- 27 Haag-Weber M, Vetter A, Thyroff-Friesinger U, et al. Therapeutic equivalence, long-term efficacy and safety of HX575 in the treatment of anemia in chronic renal failure patients receiving hemodialysis. *Clin Nephrol* 2009;72:380–90.
- 28 Lubenau H, Bias P, Maly AK, et al. Pharmacokinetic and pharmacodynamic profile of new biosimilar filgrastim XM02 equivalent to marketed filgrastim Neupogen: single-blind, randomized, crossover trial. *BioDrugs* 2009;23:43–51.
- 29 Verpoort K, Möhler TM. A non-interventional study of biosimilar granulocyte colony-stimulating factor as prophylaxis for chemotherapy-induced neutropenia in a community oncology centre. *Ther Adv Med Oncol* 2012;4:289–93.
- 30 Więcek A, Ahmed I, Scigalla P, et al. Switching epoetin alfa and epoetin zeta in patients with renal anemia on dialysis: Posthoc analysis. *Adv Ther* 2010;27:941–52.
- 31 Wizemann V, Rutkowski B, Baldamus C, et al. Comparison of the therapeutic effects of epoetin zeta to epoetin alfa in the maintenance phase of renal anaemia treatment. *Curr Med Res Opin* 2008;24:625–37.



## Efficacy and safety of switching from reference infliximab to CT-P13 compared with maintenance of CT-P13 in ankylosing spondylitis: 102-week data from the PLANETAS extension study

Won Park, Dae Hyun Yoo, Pedro Miranda, Marek Brzosko, Piotr Wiland, Sergio Gutierrez-Ureña, Helena Mikazane, Yeon-Ah Lee, Svitlana Smiyan, Mie-Jin Lim, Vladimir Kadinov, Carlos Abud-Mendoza, HoUng Kim, Sang Joon Lee, YunJu Bae, SuYeon Kim and Jürgen Braun

*Ann Rheum Dis* published online April 26, 2016

---

Updated information and services can be found at:  
<http://ard.bmj.com/content/early/2016/04/28/annrheumdis-2015-208783>

---

*These include:*

### References

This article cites 27 articles, 8 of which you can access for free at:  
<http://ard.bmj.com/content/early/2016/04/28/annrheumdis-2015-208783#BIBL>

### Open Access

This is an Open Access article distributed in accordance with the Creative Commons Attribution Non Commercial (CC BY-NC 4.0) license, which permits others to distribute, remix, adapt, build upon this work non-commercially, and license their derivative works on different terms, provided the original work is properly cited and the use is non-commercial. See: <http://creativecommons.org/licenses/by-nc/4.0/>

### Email alerting service

Receive free email alerts when new articles cite this article. Sign up in the box at the top right corner of the online article.

---

### Topic Collections

Articles on similar topics can be found in the following collections

- [Open access](#) (579)
- [Ankylosing spondylitis](#) (417)
- [Calcium and bone](#) (725)
- [Connective tissue disease](#) (4253)
- [Degenerative joint disease](#) (4641)
- [Immunology \(including allergy\)](#) (5144)
- [Musculoskeletal syndromes](#) (4951)
- [Rheumatoid arthritis](#) (3258)

---

To request permissions go to:  
<http://group.bmj.com/group/rights-licensing/permissions>

To order reprints go to:  
<http://journals.bmj.com/cgi/reprintform>

To subscribe to BMJ go to:  
<http://group.bmj.com/subscribe/>

## Notes

---

To request permissions go to:  
<http://group.bmj.com/group/rights-licensing/permissions>

To order reprints go to:  
<http://journals.bmj.com/cgi/reprintform>

To subscribe to BMJ go to:  
<http://group.bmj.com/subscribe/>